



ESSEX NORTH SHORE

AGRICULTURAL & TECHNICAL SCHOOL

Introduction to Career Technical & Agricultural Education

New Parent Orientation
August 19, 2025



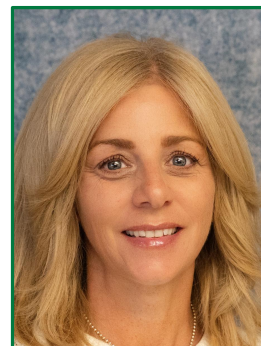
CTAE Staff



Jill Sawyer
*Executive Director
of CTAE*



John Hardacre
CTAE Coordinator



Cassia Gilroy
CTAE Coordinator



Paul Crofts
CTAE Coordinator



Ericka Remon
CTAE Coordinator

Why CTAE

**Why is Career and
Technical Education
important for today's
students?**



CTAE Works

- High school students involved in CTAE are more engaged, graduate at higher rates and typically go on to postsecondary education (two & four year college, apprenticeships, military, or technical training)
- CTAE addresses the needs of industries and helps close skills gaps
 - 44% of jobs in Massachusetts require skills training more education than high school but less than a four-year degree
 - 34 % of Massachusetts workers are trained at this level
- Massachusetts has over 64,000 students enrolled in CTAE programs

*Retrieved from [www. acteonline.org](http://www.acteonline.org)



Safety

We follow OSHA standards in all CTAE programs.

- Each program has specific safety guidelines and requirements that are essential to keep students safe.
- Students are training on live equipment.
- Your child's safety is our main concern.



Safety Guidelines

- The Following are **NOT PERMITTED** in the CTAE Programs:
 - No open toe, flip flops shoes
 - No stretch pants, No torn jeans or shorts
 - No hoodies
 - No ear buds/headphones unless needed for program
- The Following are required in CTAE Programs:
 - Freshman Exploratory Uniform T-Shirt (Short or Long Sleeve)
 - Jeans, Dickies, work pants
 - Safety glasses where appropriate
 - Safety shoes, skid resistant, leather upper shoe
 - Closed toe shoes



National Student Organizations

Co-curricular opportunities given to students for the development of leadership skills and competition in respective technical area.



Cooperative Education/Internships

Work study program for students to apply skills attained in CTAE program to an actual job. Students follow regular schedule alternating work with academic studies.

Criteria:

- No earlier than halfway through the Junior year and a minimum of 1 1/2 years in their CTE program.
- Participants must be at least sixteen years of age.

- Approval of CTAE instructor
- Minimum grade requirements
- Parent permission
- OSHA 10 hour certification
- Resume, cover letter, recommendation letter and portfolio.
- Must meet attendance and discipline standards (See Student Handbook).



Career Discovery

September 3-9, 2025 (*first GREEN week/days 6-10*)

All students will spend one block visiting each of the 26 CTAE Programs:

- **Career Technical Program Overview**

- Summary of the program
- Median Pay
- Entry level education
- Related Occupations, Transferable Skills
- Job Outlook
- Employment
- Cooperative Education Opportunities
- Licenses, Certifications, hours if applicable
- Non - Traditional Career Pathways/Opportunities

- **Career Pathways**

- **Post- Secondary Opportunities**

- Industry
- Union/ Apprenticeship
- College and Or
Continuing
Education/Licensure



Exploratory

Students will explore 7 programs

- In-District students will be allowed to select programs from only 3 different clusters.
- In-District students will continue to rank order their top preferences after Career Discovery.
- Agricultural or Surrounding Community students will rank order only the 8 agricultural programs to share their preferences
- Each explore is approximately 10 days long



Exploratory Clusters

Agricultural	Construction	STEAM	Health Sciences & Services
Arboriculture	Carpentry	Advanced Manufacturing	Dental Assisting
Landscaping & Turf Management	Construction Craft Laborers	Biotechnology	Early Education & Care
Sustainable Horticulture	Electricity	Design & Media Communications	Health Assisting
Veterinary Science	HVAC	Engineering	Automotive Technology
Companion Animals	Plumbing	Information Technology Services	Cosmetology
Equine Sciences		Metal Fabrication & Joining Technologies	Culinary Arts & Hospitality
Livestock & Poultry			Marketing
Natural & Environmental Sciences			



Exploratory

- **Improve Program Focus:** By selecting clusters, students may be able to delve deeper into a smaller set of programs.
- **Enhance Exploratory Experience:** Longer exploratory cycles could provide students with a more comprehensive understanding of potential career paths.
- **Increase Administrative Efficiency:** Moving the program selection and grade submission to after the seventh cycle will streamline the process.
- **Allow for Deeper Immersion:** Spending the entire last cycle in the selected program can provide students with a more in-depth experience.



Exploratory Grading

Name: _____

CTE Program: _____

Exploratory Reflection Top-Down Web

Technical Terminology/Tools	Career Opportunities	Safety Hazards	What Skills I Learned	My Likes	My Dislikes

ESSEX NORTH SHORE
AGRICULTURAL & TECHNICAL SCHOOL

ESSEX NORTH SHORE
AGRICULTURAL & TECHNICAL SCHOOL

2024/2025 Weekly Exploratory Grading Process

Category	% Value
Weekly Assessment	40
Written Reflection	20
Written Assessment (Safety aspects should be incorporated into at least 50% of this assignment)	20
Practical Assessment	20



Exploratory Grading

2025/2026 Freshmen Exploratory & Technical Selection

A formula is utilized to assign an Exploratory Grade Point Average (“GPA” hereafter) to each preference identified by the student and parent/ guardian. The Exploratory GPA score is tabulated based on the following formula:

- 40% Exploratory Average: The average of grades attained in all career programs completed during the Exploratory Program.
- 30% - The grade obtained in the student’s first-choice career program (based on programs completed during the Exploratory Program).
- 20% - The grade obtained in the student’s second-choice career program (based on programs completed during the Exploratory Program).
- 10% - The grade obtained in the student’s third-choice career program (based on programs completed during the Exploratory Program).



Cooperative Education continued

Criteria:

- Position must be directly related to the frameworks of the CTAE program
- Employer must be able to meet eligibility requirements
 - CORI check
 - Verification of workers comp insurance
 - Meet or exceed COVID standards
- Students must submit weekly “timesheet” for grading and attendance verification.
- Employer must allow initial site “safety check” and periodic in person check-in by ENSATS staff.



Important Dates

- Career Discovery: September 3-9 (first **GREEN** week)
- Exploratory Selection: September 10, 2025
- Exploratory Program: September 17, 2025- April 7, 2026
- CTAE Selection Process Info Night: February 3, 2026
- CTAE Program Fair: April 7, 2026
- CTAE Selection Begins: April 13, 2026
- CTAE Placement: April 27, 2026

