



Admissions Allocation Procedure

(Lottery-Based Grade 9 Enrollment by Community Minimum Targets)

School Year 2025-2026

1. Purpose

This procedure establishes a fair and transparent, lottery-based system for allocating admissions across member communities. Using [Class of 2030 data from the state's 2024-2025 School Attending Children Report](#), each community's Grade 8 population is calculated as a percentage of the total Grade 8 population across all 17 member communities. That percentage is then applied to the target enrollment of 425 students to determine each community's minimum enrollment target. Please note that since Nahant is the only community that has fewer than five seats allocated, the target minimum will be five students.

2. Member Community Minimum Targets

The following enrollment minimum targets are established for incoming Grade 9 students:

Community	Min. Target	Community	Min. Target
Beverly	51	Middleton	14
Boxford	16	Nahant	5*
Danvers	39	Peabody	71
Essex	6	Rockport	8
Gloucester	35	Salem	52
Hamilton	13	Swampscott	23
Lynnfield	23	Topsfield	15
Manchester-By-The-Sea	10	Wenham	8
Marblehead	39	Total Target (Member Communities)	427

**Indicates a Community where the percentage of school-aged children by community resulted in an under-five-seat allocation.*

3. Lottery Assignment

- **At-Large Lottery Number:**
 - Each applicant is assigned an at-large lottery number through an electronic randomized process.
 - This number establishes the applicant's overall position in the lottery system.
- **Community Lottery Waitlist:**
 - A waitlist will be created for each community based on the overall at-large lottery number.

4. Admission Rounds

Round 1: Initial Acceptances

- Seats are offered to each community's Grade 9 minimum target enrollment based on the order of the Community Lottery Waitlist.
 - *Example: The first 35 Gloucester applicants on Gloucester's Community Lottery Waitlist will be offered acceptance.*
- If a community's applicant pool is smaller than its minimum target, all applicants from that community will be accepted.
 - Remaining unfilled seats will be carried forward into later rounds.
- Applicants must accept their seat within ten school days of receiving their acceptance notification (see Admissions Policy).

Round 2: Community Waitlist (10 School Days After Round 1)

- Declined seats from each community are refilled to their minimum target enrollment using the community's lottery waitlist.
 - *Example: If Beverly's minimum target is 51, but 10 applicants decline, the next 10 applicants from Beverly's Community Lottery Waitlist will be accepted.*

Round 3 and Subsequent Rounds: Community Waitlists + At-Large Lottery Waitlist

- Communities with unfilled seats will continue to refill to their minimum target enrollment using the community's lottery waitlist.
- If a community's lottery waitlist is exhausted but has not met its minimum target allocation, the unfilled seats are offered to applicants on the at-large lottery waitlist (excluding non-resident applicants).



- *Example: If Nahant has no remaining applicants but still has three unfilled minimum target seats, those seats are reassigned to the next applicant in the overall at-large lottery waitlist, regardless of the applicant's community (excluding non-resident applicants).*

5. Waitlist

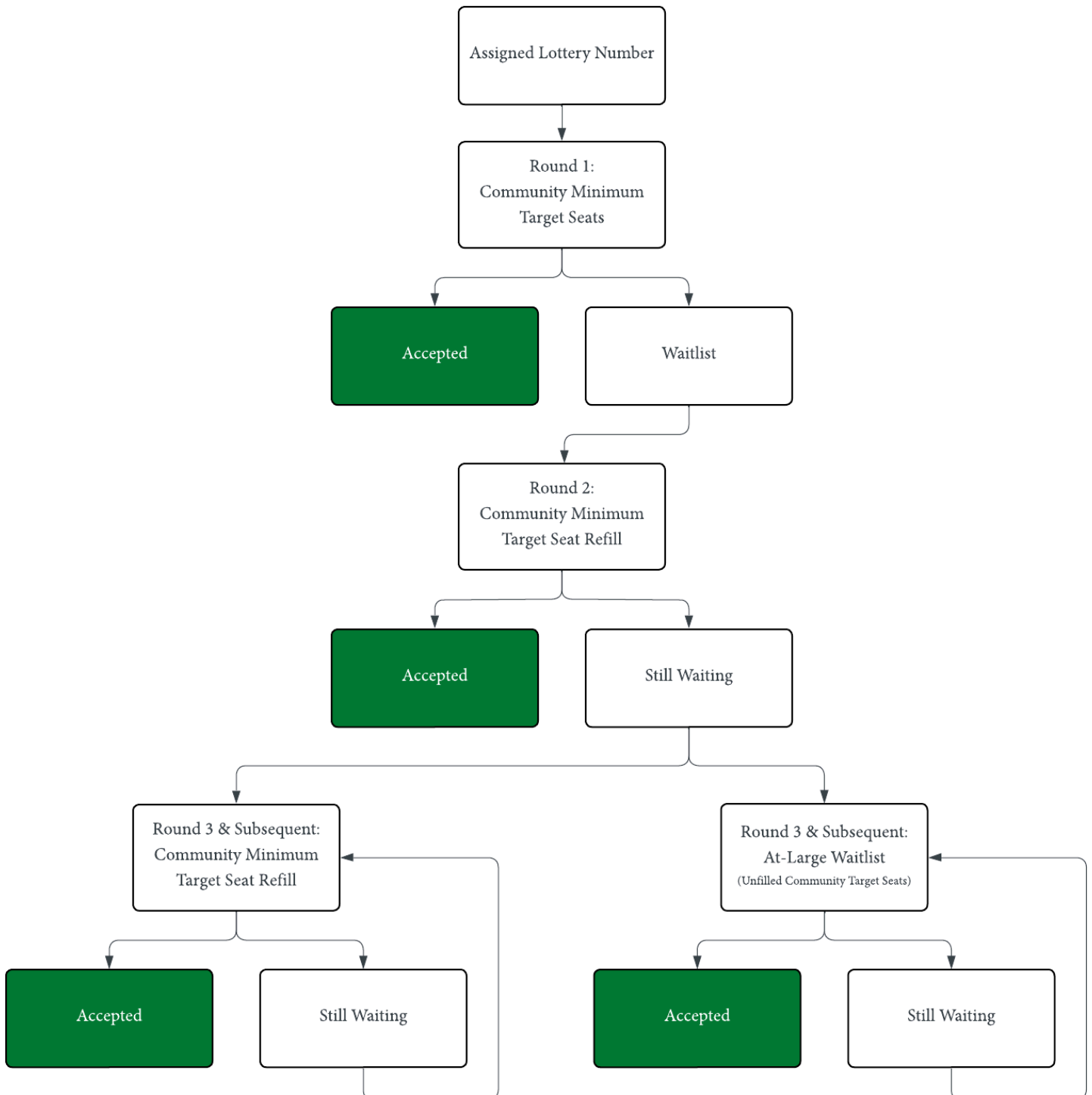
- A waitlist is maintained for each community, ordered by lottery number.
- The at-large waitlist is also maintained for reallocation of unused community seats.
- Waitlists remain active until September 30th to ensure maximum seat utilization.

6. Non-Resident Community Lottery

- Approximately 125 +/- seats are allocated for Grade 9 non-resident students to enroll in the specialized agricultural and natural resource exploratory program.
- Seats are filled based on an at-large community lottery number.
- These seats do not interact with the member community minimum target system.

Appendix

1. Member Community Applicant Paths to Acceptance Chart



2. Non-Resident Community Applicant Paths to Acceptance Chart

