



ESSEX NORTH SHORE

AGRICULTURAL & TECHNICAL SCHOOL DISTRICT

Essex Tech By the Numbers 2024-2025



- ✓ **16** buildings across **166** acres
- ✓ **1,920** total students (as of July 1, 2025)
- ✓ **390+** full and part-time staff
- ✓ **1,500+** verified applicants for **525** available spots for 2025-26 school year
- ✓ **26** career, technical, and agricultural programs
- ✓ **8** agricultural-focused program areas
- ✓ **31** extracurricular clubs and activities
- ✓ **27** varsity athletic teams



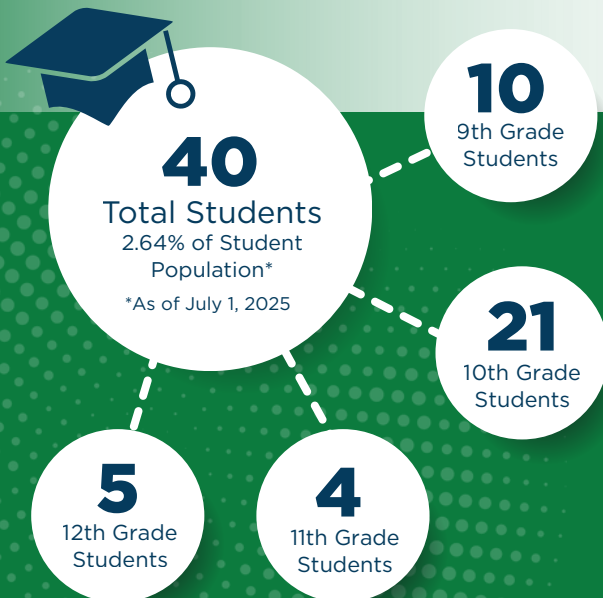
Preparing the Workforce of Tomorrow...Today

Essex North Shore Agricultural and Technical School (Essex Tech) is transforming education and workforce readiness across Massachusetts. Serving over 1900 students from 17 sending communities and 41 surrounding communities across three counties (Essex, Middlesex, Suffolk).

We don't just graduate students.
We launch careers.

Boxford

Boxford Student Enrollment



Boxford Financial Contribution

FY26 Assessment: \$658,990
(1.59% of total budget)



"DMC allows me to bring my ideas to life, it has taught me so many new things. Like the different jobs involved with the shop, what they expect, and the different skills needed."

Alexandria Morgan, Design & Media Communications Class of 2028

Programs That Prepare Students for their Future

Our schedule offers students greater opportunities to learn through a fully-articulated set of CTAE (Career Technical & Agricultural Education) programs designed to prepare students to be responsible and skillful members of the future workforce.



STEAM ACADEMY

- Advanced Manufacturing
- Biotechnology
- Design & Media Communications
- Engineering & Automation Technology
- Information Technology Services
- Metal Fabrication & Joining Technologies



CONSTRUCTION ACADEMY

- Carpentry
- Construction Craft Laborers
- Electricity
- Heating, Ventilation, Air Conditioning & Refrigeration
- Plumbing



PLANT & ANIMAL SCIENCE ACADEMY

- Arboriculture
- Landscaping & Turf Management
- Natural & Environmental Sciences
- Sustainable Horticulture
- Companion Animals
- Equine Sciences
- Livestock & Poultry
- Veterinary Science



SERVICE

- Automotive Technology
- Cosmetology
- Culinary Arts & Hospitality
- Marketing



HEALTH & SERVICES ACADEMY

- Dental Assisting
- Early Education & Care
- Health Assisting

Learning Through Real-World Experience

In 2025, 34% of juniors and 57% seniors participated in Cooperative Education



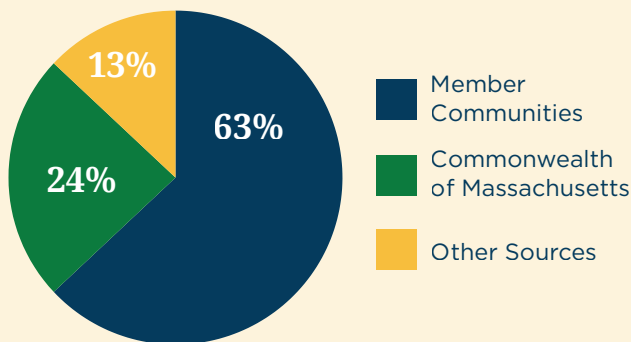
Investing in Student Success Responsibly

Take a look at our Annual Budget Report

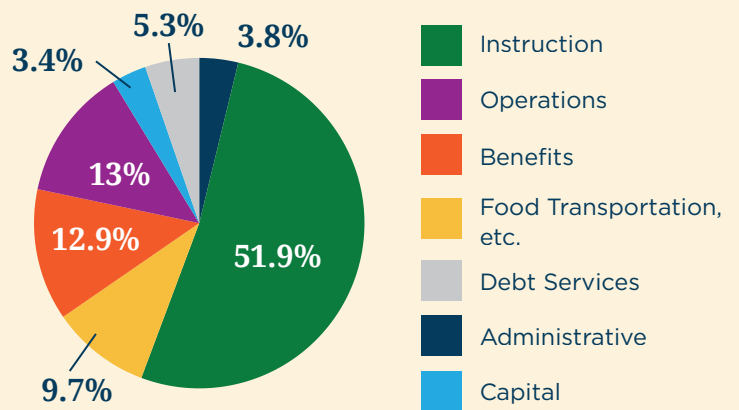


Where the Funding Comes From

Total Operating Budget: \$41,277,566



Where the Money Goes



Beyond the Operating Budget (FY25)

Securing \$10 Million in Additional Funding for Our Schools

\$7.7M Grants and Donations

\$2.1M Out-of-District Agricultural Student Tuition

From Your Town to Their Tomorrow – Essex Tech.

www.essexnorthshore.org | 565 Maple Street, Danvers, MA 01923