



# ESSEX NORTH SHORE

AGRICULTURAL & TECHNICAL SCHOOL DISTRICT

## Essex Tech By the Numbers 2024-2025



- ✓ **16** buildings across **166** acres
- ✓ **1,920** total students (as of July 1, 2025)
- ✓ **390+** full and part-time staff
- ✓ **1,500+** verified applicants for **525** available spots for 2025-26 school year
- ✓ **26** career, technical, and agricultural programs
- ✓ **8** agricultural-focused program areas
- ✓ **31** extracurricular clubs and activities
- ✓ **27** varsity athletic teams



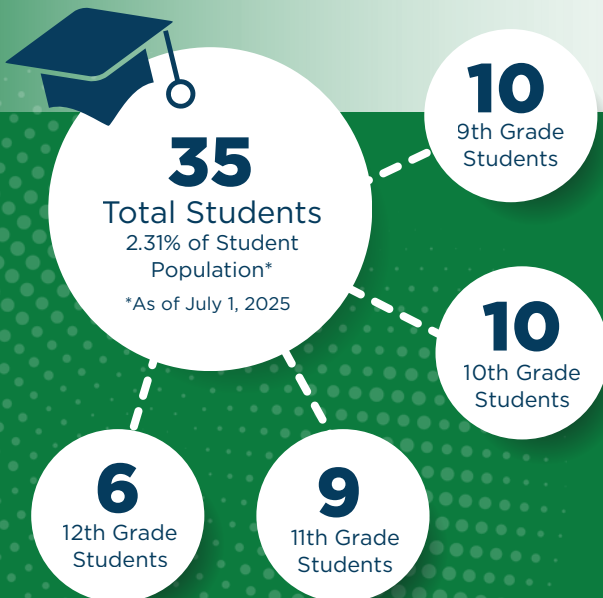
## Preparing the Workforce of Tomorrow...Today

Essex North Shore Agricultural and Technical School (Essex Tech) is transforming education and workforce readiness across Massachusetts. Serving over 1900 students from 17 sending communities and 41 surrounding communities across three counties (Essex, Middlesex, Suffolk).

We don't just graduate students.  
**We launch careers.**

# Marblehead

## Marblehead Student Enrollment



## Marblehead Financial Contribution

**FY26 Assessment: \$627,323**  
*(1.52% of total budget)*



“At Essex Tech, the Early Education and Care program has given me real-world experience and shaped my passion for working with children. It’s more than a class—it’s a chance to build the foundation for my future.”

**Madison Curtis, Early Education & Care Class of 2028**

# Programs That Prepare Students for their Future

Our schedule offers students greater opportunities to learn through a fully-articulated set of CTAE (Career Technical & Agricultural Education) programs designed to prepare students to be responsible and skillful members of the future workforce.



## STEAM ACADEMY

- Advanced Manufacturing
- Biotechnology
- Design & Media Communications
- Engineering & Automation Technology
- Information Technology Services
- Metal Fabrication & Joining Technologies



## CONSTRUCTION ACADEMY

- Carpentry
- Construction Craft Laborers
- Electricity
- Heating, Ventilation, Air Conditioning & Refrigeration
- Plumbing



## PLANT & ANIMAL SCIENCE ACADEMY

- Arboriculture
- Landscaping & Turf Management
- Natural & Environmental Sciences
- Sustainable Horticulture
- Companion Animals
- Equine Sciences
- Livestock & Poultry
- Veterinary Science



## SERVICE

- Automotive Technology
- Cosmetology
- Culinary Arts & Hospitality
- Marketing



## HEALTH & SERVICES ACADEMY

- Dental Assisting
- Early Education & Care
- Health Assisting

## Learning Through Real-World Experience

In 2025, 34% of juniors and 57% seniors participated in Cooperative Education



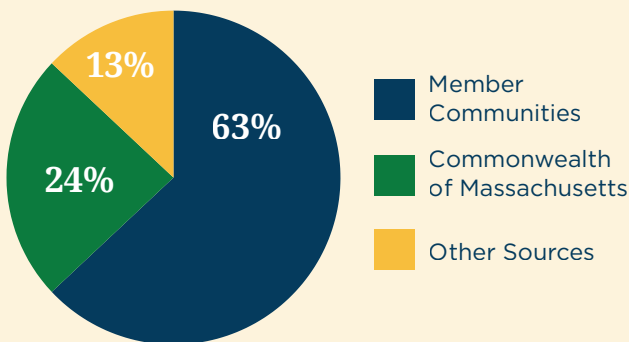
## Investing in Student Success Responsibly

Take a look at our Annual Budget Report

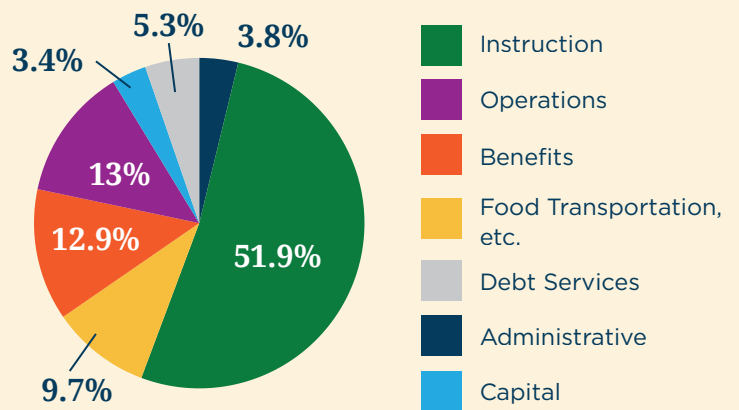


### Where the Funding Comes From

Total Operating Budget: \$41,277,566



### Where the Money Goes



Beyond the Operating Budget (FY25)

Securing \$10 Million in Additional Funding for Our Schools

**\$7.7M Grants and Donations**

**\$2.1M Out-of-District Agricultural Student Tuition**

From Your Town to Their Tomorrow – Essex Tech.

www.essexnorthshore.org | 565 Maple Street, Danvers, MA 01923